

BOSTON
WHALER



**PETREL GLOBAL SHIPS
& BOATS TRADING LLC**

Business Village-Block B 3d Floor, office
309-310, 221 Al Maktoum Rd, Dubai, UAE
www.petrel-global.com, tel.: +971 52 821 6411

230 OUTRAGE



**PETREL GLOBAL SHIPS
& BOATS TRADING LLC**

Business Village-Block B 3d Floor, office
309-310, 221 Al Maktoum Rd, Dubai, UAE
www.petrel-global.com, tel.: +971 52 821 6411

230 OUTRAGE



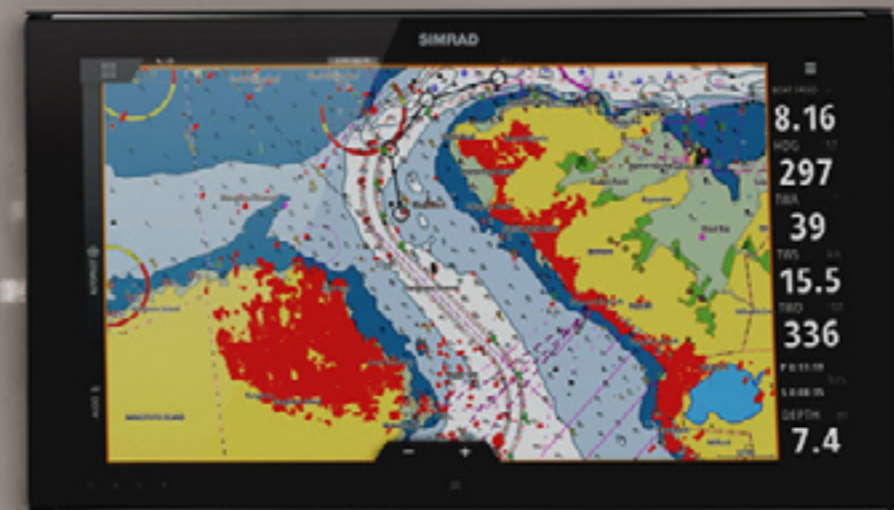
**PETREL GLOBAL SHIPS
& BOATS TRADING LLC**

Business Village-Block B 3d Floor, office
309-310, 221 Al Maktoum Rd, Dubai, UAE
www.petrel-global.com, tel.: +971 52 821 6411

230 OUTRAGE

TECHNICAL DATA

L.O.A.	23' 0" (7.01 m)
Beam	8' 6" (2.59 m)
Draft	18.5" (0.47 m)
Weight (dry, no engine)	3,800 lbs (1,724 kg)
Weight (with engine, fuel and water)	5,548 lbs (2,516 kg)
Maximum Weight Capacity	3,100 lbs (1,400 kg)
Swamped Capacity	4,960 lbs (2,250 kg)
Persons Capacity	10
Maximum Horsepower	350 hp (261 kW)
Minimum Horsepower	250 hp (186 kW)
Maximum Engine Weight	910 lbs (413 kg)
Transom Height	30" (0.76 m)
Deadrise at Transom	21°
Fuel Capacity	110 gallons (416 L)
Water Capacity	20 gallons (76 L)
Livewell Volume	16 gallons (60.6 L)
(optional)	30 gallons (113.6 L)
Bridge Clearance (no top)	6' 3" (1.91 m)
Bridge Clearance (with T-top)	8' 5" (2.57 m)
Package Boat Specs (on trailer, engine up)	31' 8"L X 8' 6"W X 9' 6"H
European Certification	C



**PETREL GLOBAL SHIPS
& BOATS TRADING LLC**

Business Village-Block B 3d Floor, office
309-310, 221 Al Maktoum Rd, Dubai, UAE
www.petrel-global.com., tel.: +971 52 821 6411

230 OUTRAGE



**PETREL GLOBAL SHIPS
& BOATS TRADING LLC**

Business Village-Block B 3d Floor, office
309-310, 221 Al Maktoum Rd, Dubai, UAE
www.petrel-global.com, tel.: +971 52 821 6411

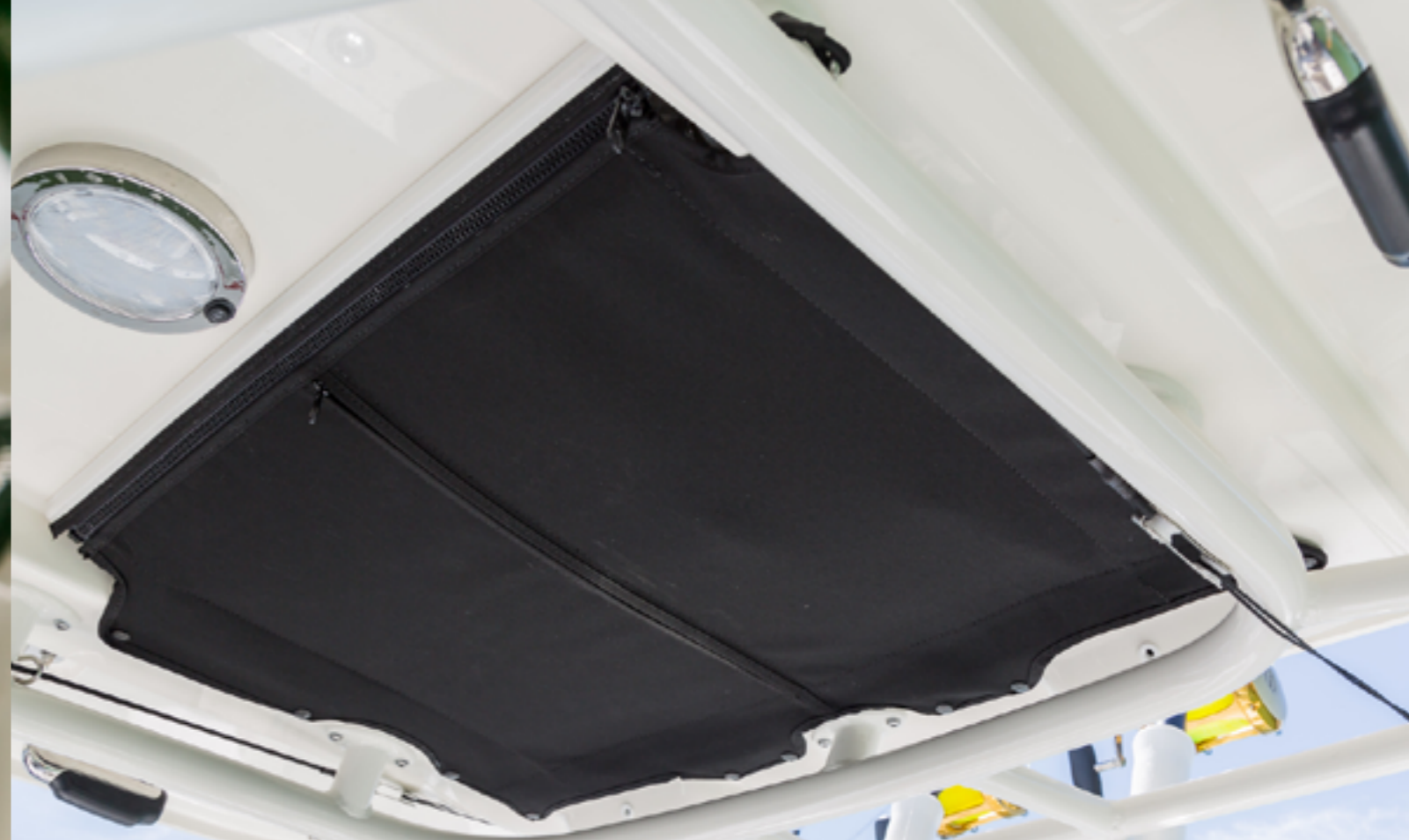
230 OUTRAGE



**PETREL GLOBAL SHIPS
& BOATS TRADING LLC**

Business Village-Block B 3d Floor, office
309-310, 221 Al Maktoum Rd, Dubai, UAE
www.petrel-global.com, tel.: +971 52 821 6411

230 OUTRAGE



**PETREL GLOBAL SHIPS
& BOATS TRADING LLC**

Business Village-Block B 3d Floor, office
309-310, 221 Al Maktoum Rd, Dubai, UAE
www.petrel-global.com, tel.: +971 52 821 6411

230 OUTRAGE



**PETREL GLOBAL SHIPS
& BOATS TRADING LLC**

Business Village-Block B 3d Floor, office
309-310, 221 Al Maktoum Rd, Dubai, UAE
www.petrel-global.com., tel.: +971 52 821 6411

230 OUTRAGE



**PETREL GLOBAL SHIPS
& BOATS TRADING LLC**

Business Village-Block B 3d Floor, office
309-310, 221 Al Maktoum Rd, Dubai, UAE
www.petrel-global.com, tel.: +971 52 821 6411

230 OUTRAGE



**PETREL GLOBAL SHIPS
& BOATS TRADING LLC**

Business Village-Block B 3d Floor, office
309-310, 221 Al Maktoum Rd, Dubai, UAE
www.petrel-global.com., tel.: +971 52 821 6411

230 OUTRAGE

10

STANDARD EQUIPMENT

- All hardware 316-L stainless steel
- All rails welded 316-L stainless steel

DECK / COCKPIT

- 8" stainless steel cleats – bow (2), stern with stainless steel hawse pipes (2), spring line (2)
- 25" interior freeboard
- Bow and stern eyes
- Cockpit courtesy lights
- Drink holders (6)
- Gunnel mounted stainless steel rod holders (4)
- Heavy-duty rub rail (white)
- Integral swim platform with recessed telescoping stainless steel swim ladder and grab rail
- Livewell (16 gallons)
- Motorwell drains (2)
- Recessed welded stainless steel forward rails
- Self-bailing cockpit sole
- Stainless steel anchor roller with cleat
- Stainless steel cockpit toe rails with downrigger weight holders
- Stainless steel grab rails
- Stern stainless steel hawse pipes with drink holders (2)
- Transom door with stainless steel latch
- Vertical rod holders (bow) (port and starboard) (4)

CONSOLE

- 12 V receptacle (2) (delete 1 when stereo is selected for USB port)
- Access panel to electronics
- Acrylic entry door with lock
- Acrylic windshield
- Cast stainless steel steering wheel with knob
- Compass
- Courtesy lights (4)
- Electronics mounting surface
- Fire extinguisher pocket
- Helm and companion footrests
- Instrumentation and electrical switch panel with circuit breaker protection and illuminated text
- Interior light
- Molded fiberglass console liner
- Portable head in console

- Stainless steel drink holders (2)
- Stainless steel grab rails (2)
- Stainless steel opening port light with screen

SEATING

- Bow seating area
- Integrated forward console seat with base and backrest cushion
- Fold-out stern seat with backrest bolster
- Powder coated convertible forward/aft facing leaning post with flip up bolster, fold down work surface and 54 qt igloo cooler

STORAGE

- Bow anchor locker with drain
- Console storage with lockable stainless-steel latch
- In-deck fishboxes with overboard drains (port and starboard) with compression latches
- Insulated bow storage locker / fishbox
- Under gunnel rod racks

MECHANICAL

- 250 V8 DTS Black Mercury® Verado® engine with hydraulic steering and fuel/water separator
- Automatic bilge pump
- Dual battery trays with switch
- Electric horn
- Fuel tank (110 gallons)
- LED navigation lights
- Recessed electric trim tabs with indicators
- SmartCraft® Deluxe Gauge Package (replaced with VesselView® 4 on dual engine options)
- Stainless steel propeller
- Tilt steering
- Transducer mount area
- VesselView mobile



NOTABLE OPTIONS/ACCESSORIES

- ☐ Active engine trim (Mercury® option that automatically adjusts drive trim based on speed)
- ☐ Anchor Package – includes: Stainless-steel Anchor and Anchor windlass – low profile with rode and anchor
- ☐ Anchor windlass chain (150') (must select anchor package)
- ☐ Batteries – GR31 AGM (factory installed)
- ☐ Bow tow eye
- ☐ Fishing Package (single engine) (not compatible with Comfort Package) – includes: cockpit coaming bolsters, fishbox pump-out, raw water washdown, transom mounted rod holders (2) (deleted with ski pylon option)
- ☐ Freshwater shower (20 gallons)
- ☐ Glove box with lockable dry storage and USB receptacle (not compatible with additional navigation display) (must select stereo)
- ☐ Lighting – underwater LED
- ☐ Portable head with pump-out and overboard discharge
- ☐ Premium Package – includes: fishbox pump-out, raw-water washdown, transom mounted rod holder (1 or 2 depending on engine option) (delete with ski pylon), cockpit coaming bolsters, forward coaming bolsters and bow cushions (3)
- ☐ Rails – split bow rail (replaces forward side rails)
- ☐ Rails – white rub rail with stainless steel insert
- ☐ Rails – black rub-rail with stainless steel insert
- ☐ Radial outriggers
- ☐ Seating Canvas Cover Package – console seat and backrest cover (black or blue), bow cushion cover (black or blue) and stern seat backrest cover (black or blue)
- ☐ Ski pylon
- ☐ Standard Canvas Cover Package – console cover (black or blue), leaning post cover (black or blue) (delete w/ leaning post with livewell), leaning post with livewell cover (deluxe) (black or blue) (not included w/ standard leaning post)
- ☐ Sunshade at bow (must select Hardtop)
- ☐ Sunshade at cockpit (must select Hardtop)
- ☐ Table – at bow (with canvas cover)
- ☐ Trailer (aluminum) – includes: disc brakes, dual torsion axels, guide-on stanchions, LED lights, radial tires, spare tire

SEATING

- ☐ Bow filler (includes bow cushions) (must select bow table)
- ☐ Deluxe leaning post with livewell – includes: fiberglass base, livewell (30-gallon) with blue interior, stainless steel rod holders (2)

TOPS/TOWERS (MUST SELECT COLOR, WHITE OR BLACK)

- ☐ Hardtop with storage bag (black or blue)
- ☐ Hardtop gelcoat (hardtop underside color matches hull color) (options include abaco blue, classic desert tan, glacier green, light blue, light grey, platinum)
- ☐ Suntop with boot (black or blue) and stainless-steel fittings

ENGINES

- ☐ 115 EFI Black Dual Command Thrust FourStroke Mercury engines with hydraulic steering and VesselView® 4 (deletes fuel/water separators)
- ☐ 150 EFI Black Dual Mercury FourStroke engines with hydraulic steering and VesselView 4 (deletes fuel/water separators)
- ☐ 300 V8 DTS Black Mercury Verado engine with power steering and fuel/water separators
- ☐ 300 V8 DTS White Mercury Verado engine with power steering and fuel/water separators
- ☐ 400 V10 DTS Black Mercury® Verado® with hydraulic power steering and fuel/water separator
- ☐ 400 V10 DTS White Mercury Verado with hydraulic power steering and fuel/water separator

ELECTRONICS

- ☐ Stereo JL Audio MM50 AM/FM with waterproof speakers (4), MP3/USB inputs, and Bluetooth® compatible
- ☐ 9" Simrad NSX Electronics/Navigation Package (Simrad NSX 9" MFD) (GPS, chart plotter, fishfinder), Active Imaging 3 in 1 transom mount transducer (CHIRP, SideScan, DownScan), C-Map® Discover™ X chart card: North America/Canada
- ☐ 9" Simrad NSX additional display Electronics Package (must Select 9" Simrad NSX Navigation Package), Simrad NSX 9" MFD (GPS, chart plotter, fishfinder)
- ☐ Thru hull transducer (must select 9" NSX additional display Electronics Package), 1,000 watt thru hull transducer (SS175 Med)
- ☐ VHF radio – Simrad RS20S VHF radio

EXTERIOR UPHOLSTERY COLOR

- ☐ Shore (Tan) (Standard) – All exterior upholstery (based on option selection), console dash tan gel coat
- ☐ Sea (Gray) – All exterior upholstery (based on option selection), console dash gray gel coat



NOTABLE OPTIONS/ACCESSORIES

GELCOAT HULL SIDE COLORS (WITH WHITE HULL BOTTOM)

- Classic Desert Tan
- Glacier Green
- Light Blue
- Platinum

COLOR PAINTED HULLS

- Abaco Blue
- Fighting Lady Yellow
- Horizon Blue
- Ice Blue
- Jadestone
- Oyster Gray
- Platinum
- Sand Metallic
- Steel Blue
- Tectonic Silver
- Wasabi

COLORED GEL COAT UNDERSIDE OF HARDTOP

- Abaco Blue
- Classic Desert Tan
- Glacier Green
- Horizon Blue
- Light Blue
- Platinum
- Steel Blue

GRAPHICS (BW LOGO, STRIPE)

- Black graphics
- Blue graphics
- Chrome graphics (with silver stripe)
- Red graphics
- Silver graphics
- White graphics

COLOR HARDTOP FRAME (MUST SELECT COLOR, MUST SELECT HARDTOP/T-TOP)

- White (Standard)
- Black

PAINTED ENGINE ACCENTS (CENTER STRIPE) (MUST SELECT COLORED HULL OPTION)

- Painted center stripe of engine cowl to match selected hull color





**PETREL GLOBAL SHIPS
& BOATS TRADING LLC**

Business Village-Block B 3d Floor, office
309-310, 221 Al Maktoum Rd, Dubai, UAE
www.petrel-global.com, tel.: +971 52 821 6411

230 OUTRAGE

14



**PETREL GLOBAL SHIPS
& BOATS TRADING LLC**

Business Village-Block B 3d Floor, office
309-310, 221 Al Maktoum Rd, Dubai, UAE
www.petrel-global.com, tel.: +971 52 821 6411

230 OUTRAGE

15

BOSTON
WHALER



**PETREL GLOBAL SHIPS
& BOATS TRADING LLC**

Business Village-Block B 3d Floor, office
309-310, 221 Al Maktoum Rd, Dubai, UAE
www.petrel-global.com, tel.: +971 52 821 6411

230 OUTRAGE