


PERSHING

140

**On the
Wings of
Freedom**



 **PETREL GLOBAL** Business Village-Block B 3d Floor, office 309-310, 221 Al Maktoum Rd, Dubai, UAE.
www.petrel-global.com., tel.: +971 52 821 6411

140

Concept
Design
Performance
Comfort
Tech Specs



La massima espressione del brivido Pershing. Pershing 140 non è solo il primo superyacht Pershing completamente in alluminio. È anche il primo yacht con plancia di comando rialzata direttamente collegata al ponte sole. Il primo ad avere l'area dedicata all'armatore sul ponte principale e il primo dotato di beach area completamente apribile su tre lati.

The ultimate expression of the Pershing thrill. The Pershing 140 is not only Pershing's first all-aluminium superyacht. It is also the first yacht with a raised helm station directly connected to the sun deck. It is the first to set the area dedicated to the owner on the main deck and is also the first to have a beach area that can open fully on three sides.

Les sensations Pershing à l'état pur. Le Pershing 140 n'est pas seulement le premier superyacht de Pershing entièrement en aluminium. C'est également le premier yacht doté d'un panneau de commande rehaussé directement relié au pont supérieur. Le premier disposant d'une zone réservée au propriétaire sur le pont principal et le premier doté d'un espace plage pouvant être ouvert depuis trois côtés.

Новый флагман бренда Pershing. Pershing 140 - это не только первая суперяхта Pershing, построенная полностью в алюминиевом корпусе. Это также первая яхта с приподнятым рулевым постом, непосредственно сообщаемся с сандеком. Это первая яхта со специальным пространством для судовладельца на главной палубе и зоной для принятия солнечных ванн, которая открывается с трех сторон.



140

Concept
Design
Performance
Comfort
Tech Specs





Pershing 140 sfoggia sul profilo le linee filanti emblema del carattere sportivo e della vocazione agonistica di Pershing, impreziosite da dettagli iconici come le due ali laterali, integrate nella sovrastruttura all'inizio dei camminamenti. La forma spiccatamente contemporanea della prua contribuisce a incrementare l'aerodinamicità del modello, garantita dal meccanismo automatico up/down di copertura degli ormeggi che mantiene una completa pulizia delle linee esterne.

Le profil du Pershing 140 arbore des lignes élancées, véritable emblème du caractère sportif de Pershing, rehaussées de détails caractéristiques comme les deux montants latéraux intégrés aux superstructures, au début des promenades. La forme extrêmement contemporaine de la proue accroît l'aérodynamisme du modèle, garantie par le mécanisme automatique de montée et descente des caches des dispositifs d'amarrage, qui permet de préserver la pureté des lignes extérieures.

The profile of the Pershing 140 displays the sleek lines that symbolize the brand's sporting, competitive spirit, enhanced by such iconic details as the two side wings integrated into the superstructure at the beginning of the walkways. The distinctly contemporary shape of the bow enhances the model's aerodynamics, guaranteed by the mooring cover with an automatic up/down mechanism that maintains the streamlined design.

Яхта Pershing 140 отличается мощными, стремительными очертаниями, которые символизируют спортивный характер и дух соперничества бренда Pershing, и дополнена такими культовыми деталями, как два боковых крыла, встроенных в надстройку в начале проходов. Ярко выраженная современная форма носовой части увеличивает аэродинамику модели, которая обеспечивается автоматическим механизмом подъема/опускания покрытия швартовов для сохранения абсолютной чистоты внешних форм.

140

- Concept
- **Design**
- Performance
- Comfort
- Tech Specs

140

Concept

Design

Performance

Comfort

Tech Specs



140

- Concept
- Design
- **Performance**
- Comfort
- Tech Specs

Outstanding hydro-jet propulsion.

4 MTU 16 V 2000 M96L da 2600 hp offrono performance in stile Pershing a qualsiasi andatura.

4 MTU 16 V 2000 M96L 2600 HP engines offer Pershing-style performance at any pace.

4 MTU 16 V 2000 M96L de 2 600 ch offrent des performances dans le plus pur style Pershing, et cela quelle que soit l'allure.

4 двигателя MTU 16 V 2000 M96L мощностью 2600 л.с. предлагают производительность в стиле Pershing при любой скорости движения.





140

Concept
Design
• Performance
Comfort
Tech Specs

Cutting-edge stabilization systems.

3 Seakeeper 35 garantiscono benessere e comfort assoluti anche durante la sosta in rada.

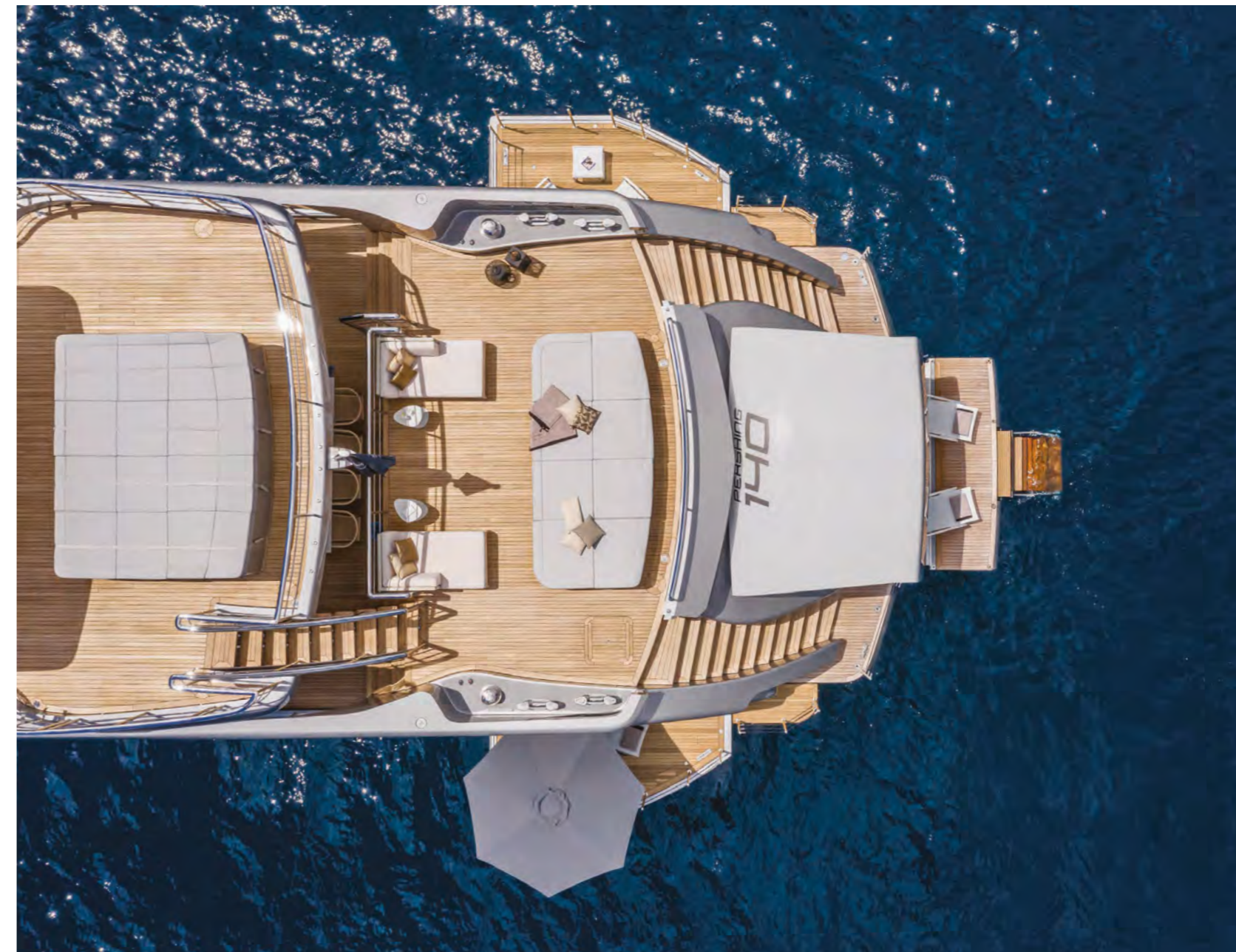
Three Seakeeper 35s guarantee absolute well-being and comfort, even while at anchor.

3 Seakeeper 35 garantissent un bien-être et un confort absolus même en cas de mouillage en rade.

3 стабилизатора Seakeeper 35 обеспечивают отличное самочувствие и комфорт также во время стоянки на рейде.

140

Concept
Design
Performance
Comfort
Tech Specs



Full on board entertainment.

L'architettura rivoluzionaria della zona poppiera è esaltata dal vasto beach club a pelo d'acqua.

The revolutionary stern area architecture is enhanced by a large beach club right at the water's edge.

L'architecture révolutionnaire de la poupe est sublimée par le grand espace plage à la surface de l'eau.

РевOLUTIONную архитектуру кормовой зоны подчеркивает просторный пляжный клуб у самой воды.





140

Concept
Design
Performance
• **Comfort**
Tech Specs

A widened excitement.

I tre ampi ponti e le spaziose aree esterne estremizzano la vivibilità a bordo del Pershing 140.

The three large decks and spacious outdoor areas make living on board the Pershing 140 extremely comfortable.

Les trois larges ponts et les grands espaces extérieurs accroissent l'habitabilité à bord du Pershing 140.

Три широких палубы и просторные наружные площадки обеспечивают абсолютно комфортные условия проживания на борту Pershing 140.



140

Concept
Design
Performance
• **Comfort**
Tech Specs

Personally unique.

Tutto il decoro di bordo è un abito su misura che l'armatore può interamente cucire a suo piacimento.

All on-board decorations are tailored to reflect the owner's style.

Le propriétaire peut entièrement personnaliser les espaces intérieurs selon ses désirs.

Все убранство яхты можно сравнить с костюмом под заказ, который судовладелец может пошить в соответствии со своими предпочтениями.



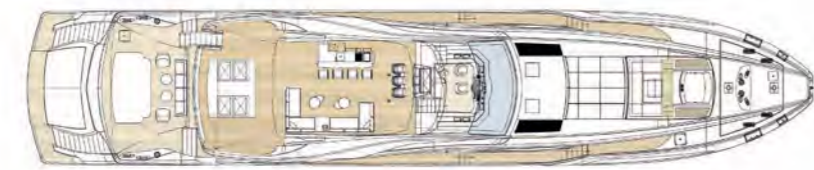




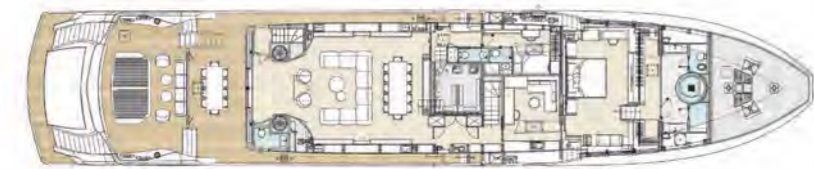




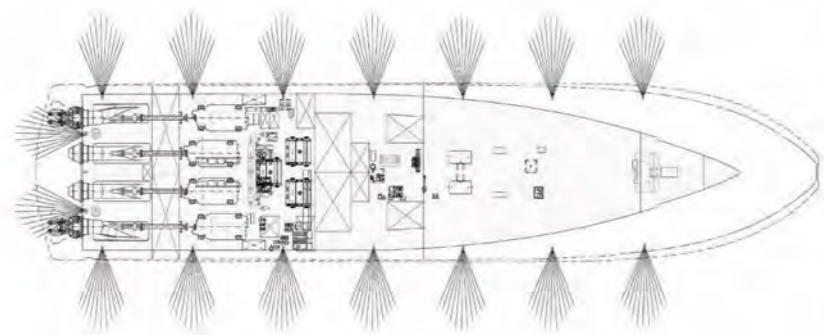
Profile



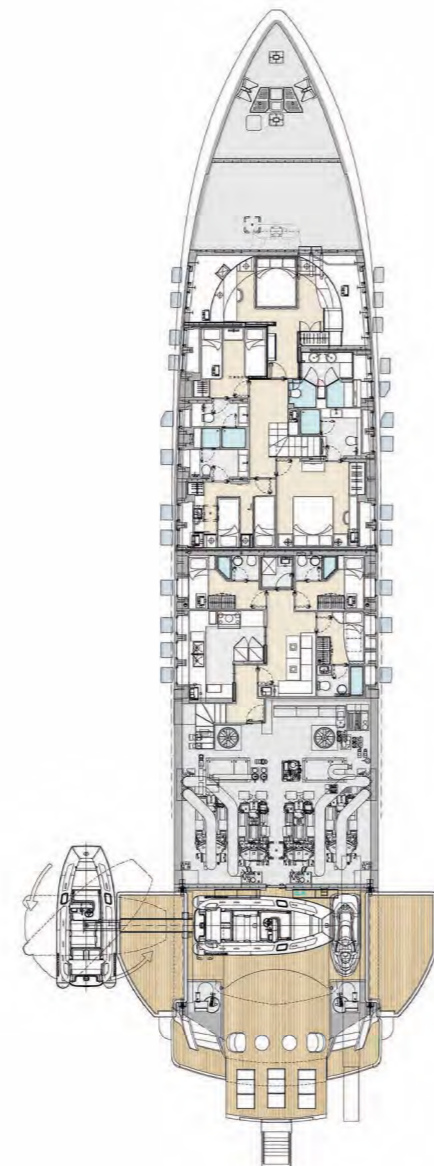
Sun Deck



Main Deck



Sub Lower Deck



Lower Deck

Technical Data

IPS

LOA = LENGTH OVER ALL ISO 8666	43.30 M / 142 FT 1 IN
LENGTH BETWEEN PERPENDICULARS	36.38 M / 119 FT 4 IN
DEPTH MOULDED	4.60 M / 15 FT 1 IN
MOULDED BEAM	8.55 M / 28 FT 1 IN
MAXIMUM DRAFT	2.05 M / 6 FT 8 IN
DISPLACEMENT IN TRIAL CONDITIONS	235 T / 518,086 LB
DISPLACEMENT FULLY LADEN	250 T / 551,156 LB
GROSS TONNAGE	394 TSL
FUEL TANK CAPACITY	30,000 L / 7,925 US GALS
WATER TANKS CAPACITY	4,000 L / 1,056 US GALS
BLACK AND GREY WATER TANK CAPACITY	3,500 L / 924 US GALS
ENGINES	MTU 16V2000 M96L POWER 2,600 MHP / 1,939KW @ 2,450 RPM
PROPULSION	MJP 2X650 STEERABLE DRIVE + 2X650 BOOSTER
MAXIMUM SPEED IN TRIAL CONDITIONS	38 KNOTS *
RANGE (10 KNOTS)	1,400 NAUTICAL MILES
CABINS	5
HEADS	7
CREW CABIN	4
CREW HEADS	4
MAXIMUM NUMBER OF PERSONS ON BOARD	18
CERTIFICATION	RINA C ⚙️ HULL • MACH, YCH SHORT RANGE COMPLIANCE WITH MALTA YACHT CODE (CYC) NAVIGATION WITHIN 60 NM FROM SAFE HEAVEN

(*) Performances are approximated and they refer to the standard equipment of the boat, at 1/2 of load corresponding to 232.5 t / 518086 lb. Performances estimated at the following conditions: calm sea, absence of wind, 25 °C air temperature, clean hull and 15 persons on board. This brochure has no legal or certification value whatsoever.

Hull, propulsion and technical project: Ferretti Group engineering department - Yacht designer: Fulvio De Simoni



Business Village-Block B 3d Floor, office 309-310, 221 Al Maktoum Rd, Dubai, UAE.
www.petrel-global.com., tel.: +971 52 821 6411