

# Custom Line Navetta 42



**PETREL GLOBAL SHIPS  
& BOATS TRADING LLC**

Office 621, 6th Floor Block A, Business Village.  
Port-Saeed Deira, Dubai UAE  
[www.petrel-global.com](http://www.petrel-global.com), tel.: +971 52 821 6411

See another sea with  
the **Custom Line Navetta 42**.  
A reflection of the owner's personality,  
she's more than a yacht;  
she's a unique masterpiece.  
Because cruising is an art.  
The art of being different.







Every journey starts  
with a Line. **Yours.**

## Dimensions

**42** metres

overall length

**8.10** metres

maximum beam

**4** decks

Dream bigger with  
Custom Line's sublime  
semi-displacement flagship.



Cruise with **passion**.  
Every time. Everywhere.



we see a unique  
creation.





Savour your sea in **magnificent style** and superb comfort with the sleek and graceful Custom Line Navetta 42.







## Facts & Figures

**3000**

nautical miles

range at 10 knots

**16**

knots

maximum speed

**13**

knots

cruising speed

Pure elegance in motion.



From the upper deck,  
the Line of your horizon  
knows **no limits**.

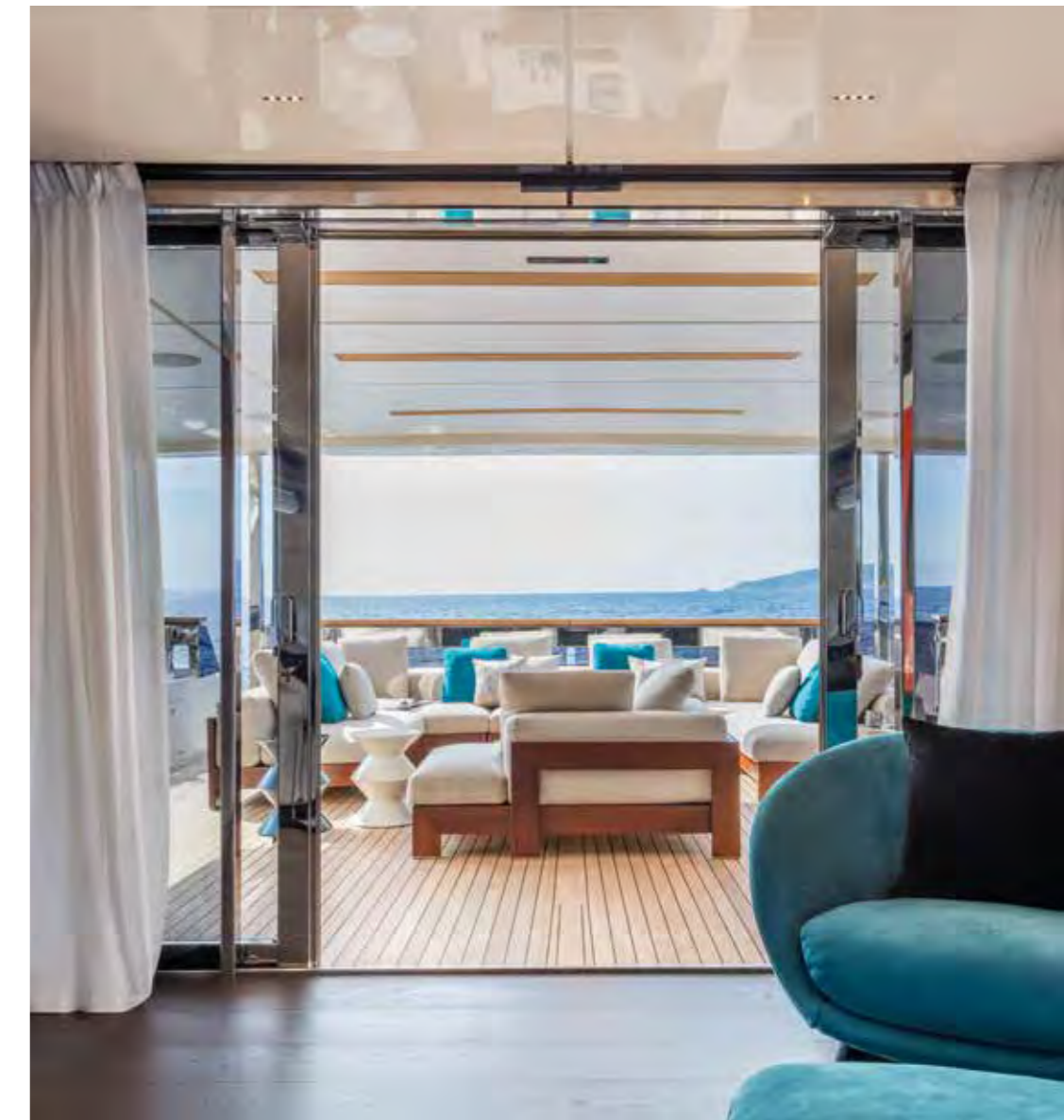








Cruising means  
creating **your story**.









Your Line, your sea,  
beyond extraordinary.



Amazing  
panoramic views

360°

panorama

3

openable floor-to-ceiling side windows

92<sub>sqm</sub>

sundeck with hard top

2

glass doors to throw wide open,  
to transform the indoor saloon  
and upper cockpit into a single space

See your own sea  
from the generous,  
spectacular windows.



we see  
a vision of beauty.





Enjoy your amazing **private beach club** on the sea.







A Line to live. A Line to love.





When the sea is not enough,  
go beyond the Line of  
your imagination.





## Key features

1

majestic sliding window  
in the owner's suite

1

Pull-out terrace projecting over the sea

1

lift linking all decks

Where sophisticated  
technology meets  
fabulous Italian style.





we see a fantastic  
sculpture.



## Palatial layouts

**50** sqm

foredeck living area

**50** sqm

owner's suite

**30** sqm

beach club

Limitless spaces  
for infinite dreams.







There's a **new Line** inscribed  
on the sea. Your Navetta.





The most fulfilling journey  
is the **discovery** of what lies inside.



Live the Line you desire.







This is the place to be.  
This is **your place.**











Details that make  
the **difference**.



A dream of beauty.  
A dream to live.



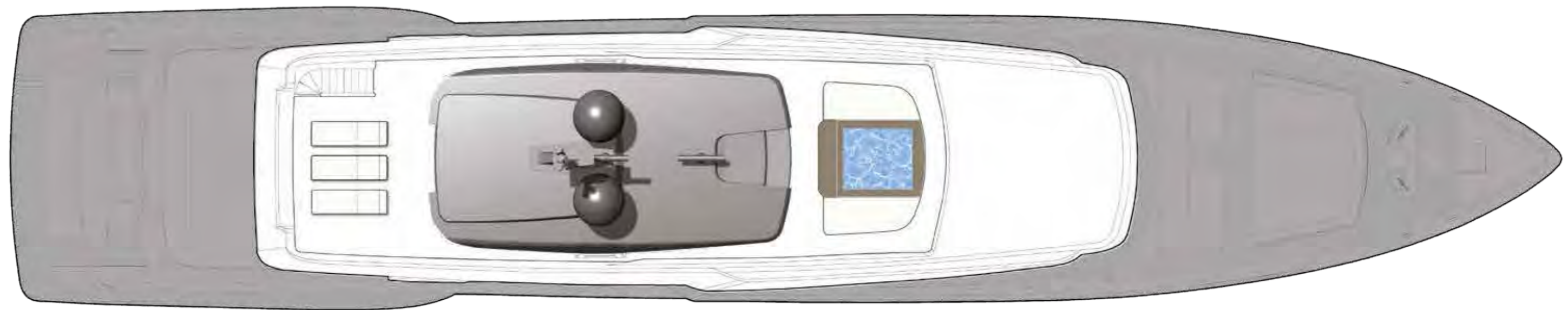
Profile

---



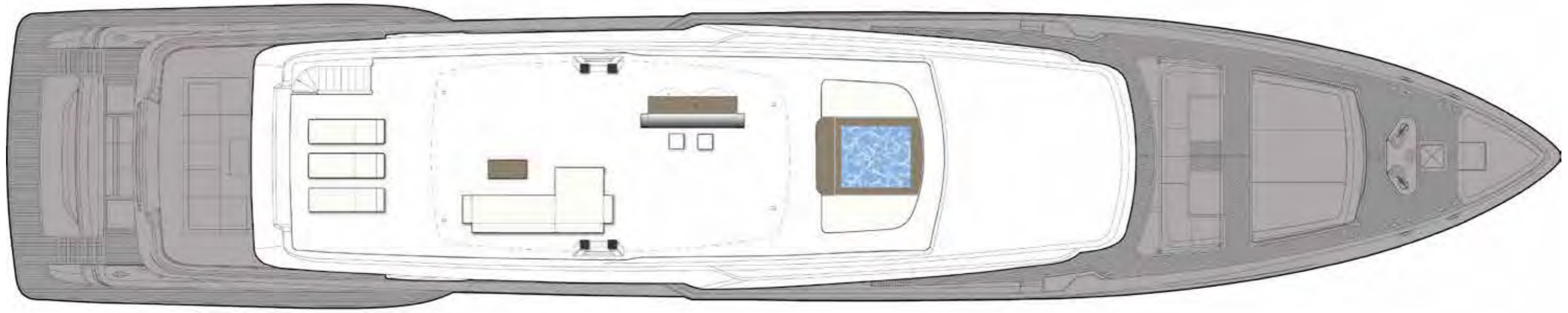
Top view

---



Sun deck

---



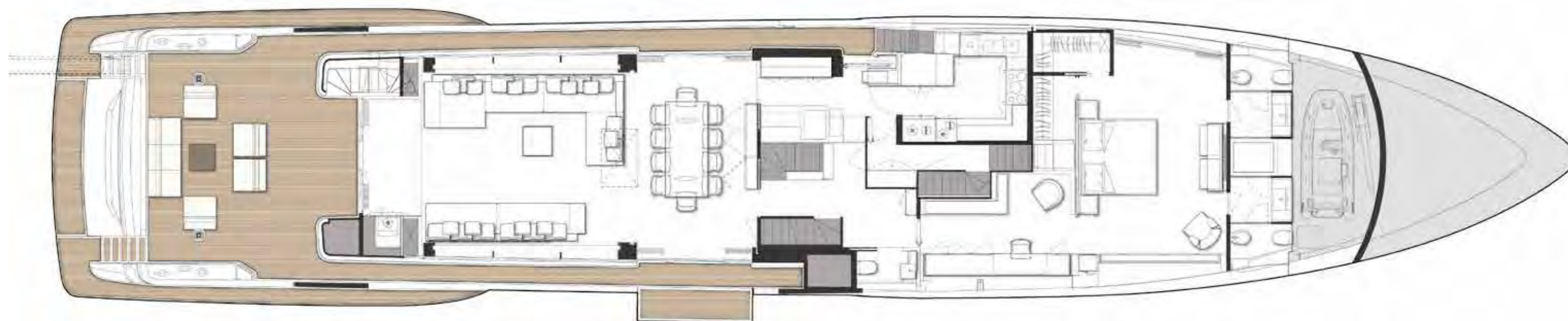
Upper deck

---

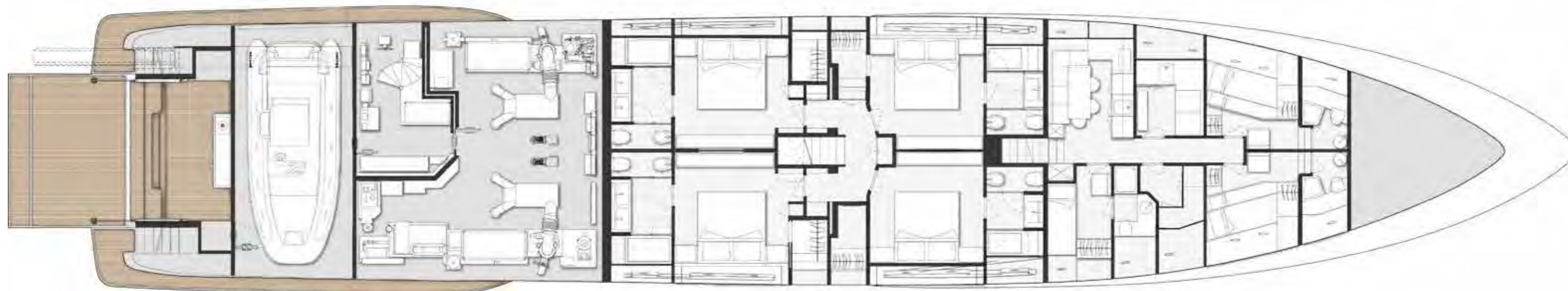




Main deck



Lower deck



# Technical data

## ENGINES

2 x CAT ACERT C32 V12 - power 1623 mhp / 1193 kW at 2300 rpm  
 2 x CAT ACERT C32 V12 - power 1470 mhp / 1081 kW at 2300 rpm

## RATING (YEAR MAX H)

std (\*)                    **D (3000h)**  
 opt (\*)                    **C (4000h)**

\* EPA TIER 3 Compliant

## SPEED (KNOTS) (REF. PERFORMANCE SPECIFICATIONS) (\*\*)

Maximum speed  
 Cruising speed (max continuous speed)

	<b>CAT 1623</b>	<b>CAT 1470</b>
Maximum speed	16	15,5
Cruising speed (max continuous speed)	13	13

## RANGE (NAUTICAL MILES) (REF. PERFORMANCE SPECIFICATIONS) (\*\*)

Maximum speed  
 Cruising speed  
 Economic cruising speed (10 knots)

	<b>CAT 1623</b>	<b>CAT 1470</b>
Maximum speed	900	950
Cruising speed	1600	1600
Economic cruising speed (10 knots)	3000	3000

## MAIN SIZES

Loa = Overall length (standard ISO 8666)  
 Lh = Hull length (standard ISO 8666)  
 Lwl = Waterline length (boat fully laden)  
 Maximum beam  
 Depth under propellers (boat fully laden)  
 Displacement unladen (\*\*)  
 Displacement laden (\*\*)  
 Gross Tonnage  
 Maximum number of persons on board

Loa = Overall length (standard ISO 8666)	41,80	m/ft. in.	<b>137' 2"</b>
Lh = Hull length (standard ISO 8666)	41,70	m/ft. in.	<b>136' 10"</b>
Lwl = Waterline length (boat fully laden)	36,60	m/ft. in.	<b>120' 1"</b>
Maximum beam	8,10	m/ft. in.	<b>26' 7"</b>
Depth under propellers (boat fully laden)	2,33	m/ft. in.	<b>7' 8"</b>
Displacement unladen (**)	220	t/lb	<b>485017</b>
Displacement laden (**)	260	t/lb	<b>573202</b>
Gross Tonnage	348	GT	
Maximum number of persons on board			<b>20</b>

Classification

## TECHNICAL DATA

Hull type: displacement hull with bulb  
 H = Overall height from keel to radar mast  
 Ht = Minimum transport height from keel (without hard top)  
 P = swim platform from transom  
 Fuel tank capacity  
 Water tanks capacity  
 Black water tank capacity  
 Grey water tank capacity

H = Overall height from keel to radar mast	14,65	m/ft. in.	<b>48' 1"</b>
Ht = Minimum transport height from keel (without hard top)	9,9	m/ft. in.	<b>32' 6"</b>
P = swim platform from transom	1,2	m/ft. in.	<b>3' 11"</b>
Fuel tank capacity	37000	lt./US gals.	<b>9774</b>
Water tanks capacity	4000	lt./US gals.	<b>1057</b>
Black water tank capacity	1900	lt./US gals.	<b>502</b>
Grey water tank capacity	1900	lt./US gals.	<b>502</b>

## PERFORMANCE SPECIFICATIONS (\*\*)

The performance is estimated at the following conditions:  
 standard version displacement of the yacht:  
 at half liquid load, clean hull, 25° C air temperature,  
 good weather conditions, 10 persons on board  
 Overloading the yacht by  
 top speed decreases of

The performance is estimated at the following conditions: standard version displacement of the yacht: at half liquid load, clean hull, 25° C air temperature, good weather conditions, 10 persons on board	241	t/lb	531786
Overloading the yacht by	10.0	t/lb	22046
top speed decreases of	1	knot	

Exterior design: Zuccon International Project  
 Interior Design: Custom Line Atelier

(\*\*) PRELIMINARY

Some  
people see  
a line;

we see  
a masterwork.





## *Leading the Future*

### *Creating Greatness*

This is our commitment as a luxury yachting group. This is the spirit that drives us, individually and collectively. This is the value we bring for our employees, our brands, our clients and society as a whole.

### *Striving for Innovation*

Ferretti Group delivers excellence through constant innovation and pioneering technology. This is how we achieve formidable performance and safety at sea, offering clients authentic experiences to satisfy their desires for affirmation and self-expression.

### *Going Global*

Ferretti Group always endeavours to be close to the market and to our customers, doing whatever it takes to deliver exceptional performance. We have built up an agile, resourceful international dealer network, supported by high-end marketing initiatives to enhance our brands' worldwide visibility and profile.

### *Empowering Expertise*

We continually spur each of our brands to go further. We leverage their special know-how, artisanal accomplishment and technological expertise to stay at the cutting edge of the nautical world.

### *Creating Value*

We focus our energy and resources on supporting our brands in their long-term development, further boosting their ability to create value. This has earned us extraordinary success over the years, helping the group become a pre-eminent player in today's yachting sector.

### *Softening our impact on the environment*

Ever aware of the need to consider the environmental and social side-effects of our products and processes, Ferretti Group publishes a Sustainability Report every year. This document maps the main impacts of our activities and outlines the initiatives in place towards more sustainable development.



PERSHING

itama

Riva

CRN

CUSTOM LINE



**PETREL GLOBAL SHIPS  
& BOATS TRADING LLC**

Office 621, 6th Floor Block A, Business Village.  
Port-Saeed Deira, Dubai UAE  
[www.petrel-global.com](http://www.petrel-global.com), tel.: +971 52 821 6411